



THE SPRAYBOOTH COMPANY

PRODUCTS CATALOGUE



www.feaspraybooth.gr

THE COMPANY

The FEA company has taken action on the field of drying car bodyshop and workshops since 1978 with the construction of car paint ovens. Over the years our company has developed and acquired its own proprietary modern facilities. Our range of products grew and the evolution of our machines to follow the needs of modern times.

The company FEA, utilizing modern design software and latest technology, offers a range of reliable products, such as automotive paint spraying cabins, trucks, buses and industrial products, pretreatment units, heaters and antipollution control units. The FEA painting cabins feature latest technology, providing the operator the unique ventilation system and excellent lighting creating excellent working conditions. Meanwhile, energy-saving and environmentally friendly, and are in line with the latest European standards. The materials used come from European companies recognized in the field and are of excellent quality.



ΚΩΝΣΤΑΝΤΕΛΛΟΣ Κ.ΚΑΙ ΣΙΑ Ο.Ε.

Car Repairs

The FEA painting cabins are made of high quality materials and resistance and they implement the latest technological innovations, while they provide you with unique ventilation system and excellent lighting, creating this way excellent working conditions for you.



Meanwhile, they are energy-saving and environmentally friendly, while they are in line with the latest European standards.



HIGH INTELLIGENCE



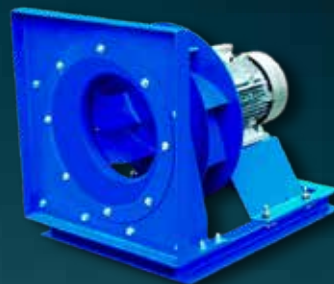
The high-intelligence cabin is a unique combination of high technology and performance. Utilizing innovative forms of technology, it provides excellent quality work to painters, offering economy in power consumption and low production costs, which affects up to 50% compared to conventional paint cabins models. It is available in various dimensions.

They offer an automated program for monitoring the air flow rate in each mode of the machine by means of inverter, the constant selection pressure in the cabin, and stand by selection (standby) to switch the air flow in the painting process. The above selection provides 100% air flow while we spray paint and the minimal flow as we leave the spray gun. All the above functions are controlled by a touch screen, which is easy to use.



In the high-intelligence cabins there is a choice of two types of fan:

- a) direct motor fan, of high efficiency fan posterior slope impeller integral to the motor, minimizing the moving parts (pulley , belts) compared with conventional fans for greater energy saving and maintenance cost, and
- b) belt drive motor fan, of high efficiency fan with sirocco type fan and drive through pulleys and belts.



In high-intelligence cabins there is the possibility of heating:

- a) direct fire burner type riello premix, running on LPG / natural gas, which is recommended in cold climates because it offers us maximum performance without losses during the combustion, with automatic fire rating without heat exchanger and without chimney
- b) heat exchanger with oil/gas burner adapted in heat exchanger inox 430

For both options there is the choice of outgoing and incoming heat and air, offering the maximum possible exploitation of the export air heat to save energy.



Excellent lighting is available in the chamber through Led lamps positioned at the top of the cabin, on the left and on the right, with a 45 angle inclination. There is the capacity for putting extra lighting in the cabin panels horizontally or vertically.





HIGH INTELLIGENCE DMDB

STANDARD EQUIPMENT



Galvanized sheet Metal base-ment. 2.5mm metal width col-umns to support grill. 1.5mm metal width around plates to support cabin.



All over grill. Led light on panels with vertical position.



Rock wool insulation panels.



Led light tubes placed on the top of the cabin (with 45° slope). Viledon ceiling filters.



Security windows. High quality hinges, handle, lock system.

OPTIONS



Internal pneumatic ramp with all grid to enter the vehicle and level from 0mm to 400mm.



Led light on panels with horizontal position.

Centrifugal fan, direct couple on motor.



Direct flame gas burner Riello RX series with auto mod-ulated flame.



Air inlet/exhaust pocket filters.



2 Damper with servo-motors belimo switch between painting and drying phase.



Control board with a touch screen display, and inverters for motors. Automatic set pressure in.



EXTRA EQUIPMENT



Heat recovery system. High efficiency static cross-flow, made of alu-minum recover and an insulated housing box.



Air dryers in 4 corners of cabin.



Low profile lift designed to repair car bodies.

HIGH INTELLIGENCE FOR CAR & VAN DMDB 7000x4100



OUTSIDE DIMENSIONS	L x W x H: 7200 x 4100 x 3600 mm (400mm metal basement is included)
INSIDE DIMENSIONS	L x W x H: 7000 x 4000 x 2750 mm
MAIN ENTRANCE	3 folded doors with total width 2700mm and height 2650mm. Galvanized steel bended with rock wool insulation (white color). Security windows.
PERSONAL DOOR	The entry and the exit of the person is achieved by one of these doors. OPTIONAL: Side door on panels with dimensions (2400 height x 900 width).
BASEMENT	Raised metal base with full of grill and height 400mm. Braking force from 650kg/wheel (standard) to 1000kg/wheel (extra). OPTIONAL: Floors full of grill and pneumatic elevated ramp in the inside of the cabin, to avoid trench construction in the building, and avoid the installment of the external ramp for car entrance.
WALL PANEL	Sheet metal panels with rock wool insulation, electrostatic paint (white color) with thickness 50mm.
LIGHTING SYSTEM	50 Led light tubes (5 led tubes into 10 boxes) placed on the top of the cabin (with 45°) and 18 Led light tubes (3 led tubes into 6 boxes) mounted on panels with vertical layout, in complete sealing boxes. OPTIONAL: 20 led tubes (2 led tubes into 10 boxes) mounted on panels with horizontal layout, in complete sealing boxes.
ROOF PANELS	Galvanized sheet metal bended panels with 40mm thickness. Rock wool insulation.
CEILING FILTERS	7 pieces ceiling filters: VILEDON F-5 / EU-5
AIR INLET-HEATING-EX-HAUST UNIT	AGGREGATE DIMENSIONS: L/W/H = 4100/1350/3600 mm Structure: Metallic structure and panels in galvanized double sheet iron, containing in between insulating material.
AIR INLET	1 centrifugal fan, direct couple on motor. Asynchronous three-phase motors 10HP (7.5 KW). Maximum air flow 26.000m³. Pocket filter F3-EU5.
HEATING UNIT	1 Direct flame gas burner RIELLO RX Series 180KW AUTOMODULATED FLAME (KW 40-180). 2 Damper with servomotors belimo switch between painting and drying phase with which we achieve 90% recirculation of the same air for faster temperature rise.
EXHAUST UNIT	1 centrifugal fan, direct couple on motor. Asynchronous three-phase motors 10HP (7.5 KW). Maximum air flow 26.000m³. Pocket filter F3-EU5
CONTROL PANEL	1 Control board with a touch screen display, set time/temperature/cabin pressure and an hardware for motor inverters. Automatic pressure in cabin. 5 different programs: stand-by/painting/withering/drying/cooling.

HIGH INTELLIGENCE FOR CAR & VAN DMDB 7000x4500



OUTSIDE DIMENSIONS	L x W x H: 7200 x 4500 x 3800 mm (400mm metal basement is included)
INSIDE DIMENSIONS	L x W x H: 7000 x 4400 x 2950 mm
MAIN ENTRANCE	4 folded doors with total width 2700mm and height 2850mm. Galvanized steel bended with rock wool insulation (white color). Security windows.
PERSONAL DOOR	The entry and the exit of the person is achieved by one of these doors. OPTIONAL: Side door on panels with dimensions (2400 height x 900 width).
BASEMENT	Raised metal base with full of grill and height 400mm. Braking force from 650 kg/wheel (standard) to 1000kg/wheel (extra). OPTIONAL: Floors full of grill and pneumatic elevated ramp in the inside of the cabin, to avoid trench construction in the building, and avoid the installment of the external ramp for car entrance.
WALL PANEL	Sheet metal panels with rock wool insulation, electrostatic paint (white color) with thickness 50mm.
LIGHTING SYSTEM	50 Led light tubes (5 led tubes into 10 boxes) placed on the top of the cabin (with 45°) and 18 Led light tubes (3 led tubes into 6 boxes) mounted on panels with vertical layout, in complete sealing boxes. OPTIONAL: 20 led tubes (2 led tubes into 10 boxes) mounted on panels with horizontal layout, in complete sealing boxes.
ROOF PANELS	Galvanized sheet metal bended panels with 40mm thickness. Rock wool insulation.
CEILING FILTERS	7 pieces ceiling filters: VILEDON F-5 / EU-5
AIR INLET-HEATING-EX-HAUST UNIT	AGGREGATE DIMENSIONS: L/W/H = 4100/1350/3800 mm Structure: Metallic structure and panels in galvanized double sheet iron, containing in between insulating material.
AIR INLET	1 centrifugal fan, direct couple on motor. Asynchronous three-phase motors 12.5HP (9 KW). Maximum air flow 30.000m³. Pocket filter F3-EU5.
HEATING UNIT	1 Direct flame gas burner RIELLO RX Series 240KW AUTOMODULATED FLAME (KW 40-240). 2 Damper with servomotors belimo switch between painting and drying phase with which we achieve 90% recirculation of the same air for faster temperature rise.
EXHAUST UNIT	1 centrifugal fan, direct couple on motor. Asynchronous three-phase motors 12.5HP (9 KW). Maximum air flow 30.000m³. Pocket filter F3-EU5.
CONTROL PANEL	1 Control board with a touch screen display, set time/temperature/cabin pressure and an hardware for motor inverters. Automatic pressure in cabin. 5 different programs: stand-by/painting/withering/drying/cooling.

HIGH INTELLIGENCE FOR CAR & VAN DMDB 8000x4500



OUTSIDE DIMENSIONS	L x W x H: 8200 x 4500 x 3800 mm (400mm metal basement is included)
INSIDE DIMENSIONS	L x W x H: 8000 x 4400 x 2950 mm
MAIN ENTRANCE	4 folded doors with total width 3600mm and height 2850mm. Galvanized steel bended with rock wool insulation (white color). Security windows.
PERSONAL DOOR	The entry and the exit of the person is achieved by one of these doors. OPTIONAL: Side door on panels with dimensions (2400 height x 900 width).
BASEMENT	Raised metal base with full of grill and height 400mm. Braking force from 650 kg/wheel (standard) to 1000 kg/wheel (extra). OPTIONAL: Floors full of grill and pneumatic elevated ramp in the inside of the cabin, to avoid trench construction in the building, and avoid the installment of the external ramp for car entrance
WALL PANEL	Sheet metal panels with rock wool insulation, electrostatic paint (white color) with thickness 50mm.
LIGHTING SYSTEM	50 Led light tubes (5 led tubes into 10 boxes) placed on the top of the cabin (with 45°) and 18 Led light tubes (3 led tubes into 6 boxes) mounted on panels with vertical layout, in complete sealing boxes. OPTIONAL: 20 led tubes (2 led tubes into 10 boxes) mounted on panels with horizontal layout, in complete sealing boxes.
ROOF PANELS	Galvanized sheet metal bended panels with 40mm thickness. Rock wool insulation.
CEILING FILTERS	8 pieces ceiling filters: VILEDON F-5 / EU-5
AIR INLET-HEATING-EX-HAUST UNIT	AGGREGATE DIMENSIONS: L/W/H = 4100/1350/3800 mm Structure: Metallic structure and panels in galvanized double sheet iron, containing in between insulating material.
AIR INLET	1 centrifugal fan, direct couple on motor. Asynchronous three-phase motors 15HP (11 KW). Maximum air flow 32.000m³. Pocket filter F3-EU5.
HEATING UNIT	1 Direct flame gas burner RIELLO RX Series 240KW AUTOMODULATED FLAME (KW 40-240). 2 Damper with servomotors belimo switch between painting and drying phase with which we achieve 90% recirculation of the same air for faster temperature rise.
EXHAUST UNIT	1 centrifugal fan, direct couple on motor. Asynchronous three-phase motors 15HP (11 KW). Maximum air flow 32.000m³. Pocket filter F3-EU5.
CONTROL PANEL	1 Control board with a touch screen display, set time/temperature/cabin pressure and an hardware for motor inverters. Automatic pressure in cabin. 5 different programs: stand-by/painting/withering/drying/cooling.



HIGH INTELLIGENCE BMHB

STANDARD EQUIPMENT



Galvanized sheet Metal base-ment. 2.5mm metal width col-umns to support grill. 1.5mm metal width around plates to support cabin.



All over grill. Led light on panels with vertical position cabin.



Rock wool insulation panels.



Led light tubes placed on the top of the cabin (with 45° slope). Viledon ceiling filters.



Security windows. High quality hinges, handle, lock system.

OPTIONS



Internal pneumatic ramp with all grid to enter the vehicle and level from 0mm to 400mm.



Led light on panels with horizontal position.

Belt drive motor-fan



Stainless steel Heat exchanger couple on Riello oil / gas burner



Air inlet/exhaust pocket filters.



1 pneumatic damper, switch between painting and drying phase.



Control board with a touch screen display, and inverters for motors. Automatic set pressure in.



EXTRA EQUIPMENT



Heat recovery system. High efficiency static cross-flow, made of alu-minum recover and an insulated housing box.



Air dryers in 4 corners of cabin.



Low profile lift designed to repair car bodies.

HIGH INTELLIGENCE FOR CAR & VAN BMHB 7000x4100



OUTSIDE DIMENSIONS	L x W x H: 7200 x 4100 x 3600 mm (400mm metal basement is included)
INSIDE DIMENSIONS	L x W x H: 7000 x 4000 x 2750 mm
MAIN ENTRANCE	3 folded doors with total width 2700mm and height 2650mm. Galvanized steel bended with rock wool insulation (white color). Security windows.
PERSONAL DOOR	The entry and the exit of the person is achieved by one of these doors. OPTIONAL: Side door on panels with dimensions (2400 height x 900 width).
BASEMENT	Raised metal base with full of grill and height 400mm. Braking force from 650 kg/wheel (standard) to 1000kg/wheel (extra). OPTIONAL: Floors full of grill and pneumatic elevated ramp in the inside of the cabin, to avoid trench construction in the building, and avoid the installment of the external ramp for car entrance.
WALL PANEL	Sheet metal panels with rock wool insulation, electrostatic paint (white color) with thickness 50mm.
LIGHTING SYSTEM	50 Led light tubes (5 led tubes into 10 boxes) placed on the top of the cabin (with 45°) and 18 Led light tubes (3 led tubes into 6 boxes) mounted on panels with vertical layout, in complete sealing boxes. OPTIONAL: 20 led tubes (2 led tubes into 10 boxes) mounted on panels with horizontal layout, in complete sealing boxes.
ROOF PANELS	Galvanized sheet metal bended panels with 40mm thickness. Rock wool insulation.
CEILING FILTERS	7 pieces ceiling filters: VILEDON F-5 / EU-5
AIR INLET-HEATING-EX-HAUST UNIT	AGGREGATE DIMENSIONS: INTAKE: L/W/H = 1900/1550/3600 mm, EXHAUST: L/W/H = 2200/1350/2000 mm. Structure: Metallic structure and panels in galvanized double sheet iron, containing in between insulating material.
AIR INLET	1 Double centrifugal fan, belt drive motor. Asynchronous three-phase motors 10HP (7.5 KW). Maximum air flow 26.000m³. Pocket filter F3-EU5.
HEATING UNIT	1 RIELLO oil burner (OPTIONAL GAS) adapted on a heat exchanger of 160.000 Kcal. 1 Pneumatic damper switch between painting and drying phase with which we achieve 90% recirculation of the same air for faster temperature rise.
EXHAUST UNIT	1 centrifugal fan, belt drive motor. Asynchronous three-phase motors 10HP (7.5 KW). Maximum air flow 26.000m³. Pocket filter F3-EU5.
CONTROL PANEL	1 Control board with a touch screen display, set time/temperature/cabin pressure and an hardware for motor inverters. Automatic pressure in cabin. 5 different programs: stand-by/painting/withering/drying/cooling.

HIGH INTELLIGENCE FOR CAR & VAN BMHB 7000x4500



OUTSIDE DIMENSIONS	L x W x H: 7200 x 4500 x 3800 mm (400mm metal basement is included)
INSIDE DIMENSIONS	L x W x H: 7000 x 4400 x 2950 mm
MAIN ENTRANCE	4 folded doors with total width 3600mm and height 2850mm. Galvanized steel bended with rock wool insulation (white color). Security windows.
PERSONAL DOOR	The entry and the exit of the person is achieved by one of these doors. OPTIONAL: Side door on panels with dimensions (2400 height x 900 width).
BASEMENT	Raised metal base with full of grill and height 400mm. Braking force from 650 kg/wheel (standard) to 1000kg/wheel (extra). OPTIONAL: Floors full of grill and pneumatic elevated ramp in the inside of the cabin, to avoid trench construction in the building, and avoid the installment of the external ramp for car entrance.
WALL PANEL	Sheet metal panels with rock wool insulation, electrostatic paint (white color) with thickness 50mm.
LIGHTING SYSTEM	50 Led light tubes (5 led tubes into 10 boxes) placed on the top of the cabin (with 45°) and 18 Led light tubes (3 led tubes into 6 boxes) mounted on panels with vertical layout, in complete sealing boxes. OPTIONAL: 20 led tubes (2 led tubes into 10 boxes) mounted on panels with horizontal layout, in complete sealing boxes.
ROOF PANELS	Galvanized sheet metal bended panels with 40mm thickness. Rock wool insulation.
CEILING FILTERS	7 pieces ceiling filters: VILEDON F-5 / EU-5
AIR INLET-HEATING-EX-HAUST UNIT	AGGREGATE DIMENSIONS: INTAKE: L/W/H = 1900/1550/3800 mm, EXHAUST: L/W/H = 2200/1350/2000 mm. Structure: Metallic structure and panels in galvanized double sheet iron, containing in between insulating material.
AIR INLET	1 double centrifugal fan, belt drive motor. Asynchronous three-phase motors 12.5HP (9 KW). Maximum air flow 28.000m³. Pocket filter F3-EU5.
HEATING UNIT	1 RIELLO oil burner (OPTIONAL GAS) adapted on a heat exchanger of 200.000 Kcal. 1 pneumatic damper switch between painting and drying phase with which we achieve 90% recirculation of the same air for faster temperature rise.
EXHAUST UNIT	1 centrifugal fan, belt drive motor. Asynchronous three-phase motors 12.5HP (9 KW). Maximum air flow 28.000m³. Pocket filter F3-EU5.
CONTROL PANEL	1 Control board with a touch screen display, set time/temperature/cabin pressure and an hardware for motor inverters. Automatic pressure in cabin. 5 different programs: stand-by/painting/withering/drying/cooling.

HIGH INTELLIGENCE FOR CAR & VAN BMHB 8000x4500



OUTSIDE DIMENSIONS	L x W x H: 8200 x 4500 x 3800 mm (400mm metal basement is included)
INSIDE DIMENSIONS	L x W x H: 8000 x 4400 x 2950 mm
MAIN ENTRANCE	4 folded doors with total width 3600mm and height 2850mm. Galvanized steel bended with rock wool insulation (white color). Security windows.
PERSONAL DOOR	The entry and the exit of the person is achieved by one of these doors. OPTIONAL: Side door on panels with dimensions (2400 height x 900 width).
BASEMENT	Raised metal base with full of grill and height 400mm. Braking force from 650 kg/wheel (standard) to 1000 kg/wheel (extra). OPTIONAL: Floors full of grill and pneumatic elevated ramp in the inside of the cabin, to avoid trench construction in the building, and avoid the installment of the external ramp for car entrance
WALL PANEL	Sheet metal panels with rock wool insulation, electrostatic paint (white color) with thickness 50mm.
LIGHTING SYSTEM	50 Led light tubes (5 led tubes into 10 boxes) placed on the top of the cabin (with 45°) and 18 Led light tubes (3 led tubes into 6 boxes) mounted on panels with vertical layout, in complete sealing boxes. OPTIONAL: 20 led tubes (2 led tubes into 10 boxes) mounted on panels with horizontal layout, in complete sealing boxes.
ROOF PANELS	Galvanized sheet metal bended panels with 40mm thickness. Rock wool insulation.
CEILING FILTERS	8 pieces ceiling filters: VILEDON F-5 / EU-5
AIR INLET-HEATING-EX-HAUST UNIT	AGGREGATE DIMENSIONS: INTAKE: L/W/H = 2400/1550/3800 mm, EXHAUST: L/W/H = 2200/1350/2000 mm. Structure: Metallic structure and panels in galvanized double sheet iron, containing in between insulating material.
AIR INLET	1 double centrifugal fan, belt drive motor. Asynchronous three-phase motors 15HP (11 KW). Maximum air flow 32.000m³. Pocket filter F3-EU5.
HEATING UNIT	1 RIELLO oil burner (OPTIONAL GAS) adapted on a heat exchanger of 240.000 Kcal. 1 pneumatic damper switch between painting and drying phase with which we achieve 90% recirculation of the same air for faster temperature rise.
EXHAUST UNIT	1 centrifugal fan, belt drive motor. Asynchronous three-phase motors 15HP (11 KW). Maximum air flow 32.000m³. Pocket filter F3-EU5.
CONTROL PANEL	1 Control board with a touch screen display, set time/temperature/cabin pressure and an hardware for motor inverters. Automatic pressure in cabin. 5 different programs: stand-by/painting/withering/drying/cooling.

TITANIUM



The Titanium cabin is the main model of our company. It constitutes a reliable and proven-choice by experts of the industry for those looking for high quality at an affordable price.

Made of high quality materials, it has an electronic control panel, easy to use with the PLC system for the safest operation and maintenance of the machine. In this way, you are

promptly notified via a siren for any replacement filters required. It also has inverters in the motors with manual set pressure and air speed in cabin for greater economy, avoid voltage drop and less stress of the moving parts, ensuring a longer lifetime. Finally, high-quality lighting is available in the chamber through maximum efficiency fluorescent lamps.





TITANIUM BMHB



STANDARD EQUIPMENT



Galvanized sheet Metal base-ment. 2.5mm metal width col-umns to support grill. 1.5mm metal width around plates to support cabin.



All over grill. Led light on panels with vertical position cabin.



Non-combustible polyure-thane insulation panels.



Led light tubes placed on the top of the cabin (with 45° slope). Viledon ceiling filters.



Security windows. High quality hinges, handle, lock system.

OPTIONS



Internal pneumatic ramp with all grid to enter the vehicle and level from 0mm to 400mm.



Led light on panels with hori-zontal position.

Belt drive motor-fan



Stainless steel Heat exchanger couple on Riello oil / gas burner



Air inlet/exhaust pocket filters.



1 pneumatic damper, switch between painting and drying phase.



Control board with plc management of the system, inverters for motors with manual set pressure and air speed in cabin during potentiometer



EXTRA EQUIPMENT



Heat recovery system. High efficiency static cross-flow, made of alu-minum recover and an insulated housing box.



Air dryers in 4 corners of cabin.



Low profile lift designed to repair car bodies.

TITANIUM FOR VAN BMHB 7000x4100



OUTSIDE DIMENSIONS	L x W x H: 7200 x 4100 x 3550 mm <i>(350mm metal basement is included)</i>
INSIDE DIMENSIONS	L x W x H: 7000 x 4000 x 2750 mm
MAIN ENTRANCE	3 folded doors with total width 2700mm and height 2650mm. Galvanized steel bended with rock wool insulation (<i>white color</i>). Security windows.
PERSONAL DOOR	The entry and the exit of the person is achieved by one of these doors. OPTIONAL: Side door on panels with dimensions (2400 height x 900 width).
BASEMENT	Raised metal base with full of grill and height 350mm. Braking force from 650 kg/wheel (<i>standard</i>) to 1000kg/wheel (<i>extra</i>). OPTIONAL: Floors full of grill and pneumatic elevated ramp in the inside of the cabin, to avoid trench construction in the building, and avoid the installment of the external ramp for car entrance.
WALL PANEL	Sheet metal panels with non-combustible polyurethane insulation, electrostatic paint (<i>white color</i>) with thickness 40mm. OPTIONAL: Rock wool panels.
LIGHTING SYSTEM	50 Led light tubes (5 led tubes into 10 boxes) placed on the top of the cabin (<i>with 45°</i>) and 18 Led light tubes (3 led tubes into 6 boxes) mounted on panels with vertical layout, in complete sealing boxes. OPTIONAL: 20 led tubes (2 led tubes into 10 boxes) mounted on panels with horizontal layout, in complete sealing boxes.
ROOF PANELS	Sheet metal panels with non-combustible polyurethane insulation, with thickness 40mm. OPTIONAL: Rock wool panels.
CEILING FILTERS	7 pieces ceiling filters: VILEDON F-5 / EU-5
AIR INLET-HEATING-EX-HAUST UNIT	AGGREGATE DIMENSIONS: INTAKE: L/W/H = 1900/1550/3550 mm, EXHAUST: L/W/H = 2200/1350/2000 mm. Structure: Metallic structure and panels in galvanized double sheet iron, containing in between insulating material.
AIR INLET	1 double centrifugal fan, belt drive motor. Asynchronous three-phase motors 10HP (7.5 KW). Maximum air flow 26.000m ³ . Pocket filter F3-EU5.
HEATING UNIT	1 RIELLO oil burner (<i>OPTIONAL GAS</i>) adapted on a heat exchanger of 160.000 Kcal. 1 pneumatic damper switch between painting and drying phase with which we achieve 90% recirculation of the same air for faster temperature rise.
EXHAUST UNIT	1 centrifugal fan, belt drive motor. Asynchronous three-phase motors 10HP (7.5 KW). Maximum air flow 26.000m ³ . Pocket filter F3-EU5.
CONTROL PANEL	1 control board with plc management of the system, inverters for motors with manual set pressure and air speed in cabin during potentiometer. Spray, heated spray, bake, time setting, lighting switch, temperature – limit device, power switch ,failure alarm, hour meter for filters with siren for filter changing.

TITANIUM FOR VAN BMHB 7000x4500



OUTSIDE DIMENSIONS	L x W x H: 7200 x 4500 x 3800 mm (350mm metal basement is included)
INSIDE DIMENSIONS	L x W x H: 7000 x 4400 x 2950 mm
MAIN ENTRANCE	4 folded doors with total width 3600mm and height 2850mm. Galvanized steel bended with rock wool insulation (white color). Security windows.
PERSONAL DOOR	The entry and the exit of the person is achieved by one of these doors. OPTIONAL: Side door on panels with dimensions (2400 height x 900 width).
BASEMENT	Raised metal base with full of grill and height 350mm. Braking force from 650 kg/wheel (standard) to 1000kg/wheel (extra). OPTIONAL: Floors full of grill and pneumatic elevated ramp in the inside of the cabin, to avoid trench construction in the building, and avoid the installment of the external ramp for car entrance.
WALL PANEL	Sheet metal panels with non-combustible polyurethane insulation, electrostatic paint (white color) with thickness 40mm. OPTIONAL: Rock wool panels.
LIGHTING SYSTEM	50 Led light tubes (5 led tubes into 10 boxes) placed on the top of the cabin (with 45°) and 18 Led light tubes (3 led tubes into 6 boxes) mounted on panels with vertical layout, in complete sealing boxes. OPTIONAL: 20 led tubes (2 led tubes into 10 boxes) mounted on panels with horizontal layout, in complete sealing boxes.
ROOF PANELS	Sheet metal panels with non-combustible polyurethane insulation, with thickness 40mm. OPTIONAL: Rock wool panels.
CEILING FILTERS	7 pieces ceiling filters: VILEDON F-5 / EU-5
AIR INLET-HEATING-EX-HAUST UNIT	AGGREGATE DIMENSIONS: INTAKE: L/W/H = 1900/1550/3800 mm, EXHAUST: L/W/H = 2200/1350/2000 mm. Structure: Metallic structure and panels in galvanized double sheet iron, containing in between insulating material.
AIR INLET	1 double centrifugal fan, belt drive motor. Asynchronous three-phase motors 12.5HP (9 KW). Maximum air flow 28.000m³. Pocket filter F3-EU5.
HEATING UNIT	1 RIELLO oil burner (OPTIONAL GAS) adapted on a heat exchanger of 200.000 Kcal. 1 pneumatic damper switch between painting and drying phase with which we achieve 90% recirculation of the same air for faster temperature rise.
EXHAUST UNIT	1 centrifugal fan, belt drive motor. Asynchronous three-phase motors 12.5HP (9 KW). Maximum air flow 28.000m³. Pocket filter F3-EU5.
CONTROL PANEL	1 control board with plc management of the system, inverters for motors with manual set pressure and air speed in cabin during potentiometer. Spray, heated spray, bake, time setting, lighting switch, temperature – limit device, power switch ,failure alarm, hour meter for filters with siren for filter changing.

TITANIUM FOR VAN BMHB 8000x4500



OUTSIDE DIMENSIONS	L x W x H: 8200 x 4500 x 3800 mm (350mm metal basement is included)
INSIDE DIMENSIONS	L x W x H: 8000 x 4400 x 2950 mm
MAIN ENTRANCE	4 folded doors with total width 3600mm and height 2850mm. Galvanized steel bended with rock wool insulation (white color). Security windows.
PERSONAL DOOR	The entry and the exit of the person is achieved by one of these doors. OPTIONAL: Side door on panels with dimensions (2400 height x 900 width).
BASEMENT	Raised metal base with full of grill and height 350mm. Braking force from 650 kg/wheel (standard) to 1000kg/wheel (extra). OPTIONAL: Floors full of grill and pneumatic elevated ramp in the inside of the cabin, to avoid trench construction in the building, and avoid the installment of the external ramp for car entrance.
WALL PANEL	Sheet metal panels with non-combustible polyurethane insulation, electrostatic paint (white color) with thickness 40mm. OPTIONAL: Rock wool panels.
LIGHTING SYSTEM	50 Led light tubes (5 led tubes into 10 boxes) placed on the top of the cabin (with 45°) and 18 Led light tubes (3 led tubes into 6 boxes) mounted on panels with vertical layout, in complete sealing boxes. OPTIONAL: 20 led tubes (2 led tubes into 10 boxes) mounted on panels with horizontal layout, in complete sealing boxes.
ROOF PANELS	Sheet metal panels with non-combustible polyurethane insulation, with thickness 40mm. OPTIONAL: Rock wool panels.
CEILING FILTERS	8 pieces ceiling filters: VILEDON F-5 / EU-5
AIR INLET-HEATING-EX-HAUST UNIT	AGGREGATE DIMENSIONS: INTAKE: L/W/H = 2400/1550/3800 mm, EXHAUST: L/W/H = 2200/1350/2000 mm. Structure: Metallic structure and panels in galvanized double sheet iron, containing in between insulating material.
AIR INLET	1 Double centrifugal fan, belt drive motor. Asynchronous three-phase motors 15HP (11 KW). Maximum air flow 32.000m³. Pocket filter F3-EU5.
HEATING UNIT	1 RIELLO oil burner (OPTIONAL GAS) adapted on a heat exchanger of 240.000 Kcal. 1 Pneumatic damper switch between painting and drying phase with which we achieve 90% recirculation of the same air for faster temperature rise.
EXHAUST UNIT	1 centrifugal fan, belt drive motor. Asynchronous three-phase motors 15HP (11 KW). Maximum air flow 32.000m³. Pocket filter F3-EU5.
CONTROL PANEL	1 Control board with plc management of the system, inverters for motors with manual set pressure and air speed in cabin during potentiometer. Spray, heated spray, bake, time setting, lighting switch, temperature – limit device, power switch, failure alarm, hour meter for filters with siren for filter changing.

EASY TECH

The Easy Tech cabin is a classic spray booth model. It constitutes a reliable and proven choice by experts of the industry for those looking for high quality at an affordable price. Made of high quality materials, it has an electronic control panel, easy to use with the PLC system for the safest operation and maintenance of the machine. In this way, you are promptly notified via a siren for any replacement filters required. It also has soft starters in the motors for greater economy during their start-up, avoid voltage drop and less stress of the moving parts, ensuring a longer life-time. Finally, high-quality lighting is available in the chamber through maximum efficiency fluorescent lamps.








EASY TECH BMHB

STANDARD EQUIPMENT

	Galvanized sheet Metal base-ment. 2.5mm metal width col-umns to support grill. 1.5mm metal width around plates to support cabin.
	3 lines of grill.
	Non-combustible polyure-thane insulation panels
	Led light tubes placed on the top of the cabin (with 45° slope). EU-5 ceiling filters.
	Security windows. High quality hinges, handle, lock system.

OPTIONS

	Internal pneumatic ramp with all grid to enter the vehicle and level from 0mm to 400mm.
	Led light on panels with hori-zontal position.
	All over grill. Led light on pan-els with vertical position.



Belt drive motor-fan



Stainless steel Heat exchanger couple on Riello oil / gas burner



Air inlet/exhaust pocket filters.



1 pneumatic damper, switch between painting and drying phase.



Control board with plc management of the system, soft start-ers for motors



EXTRA EQUIPMENT



Heat recovery system. High efficiency static cross-flow, made of alu-minum recover and an insulated housing box.



Air dryers in 4 corners of cabin.



Low profile lift designed to repair car bodies.

EASY TECH BMHB

6000x4000



OUTSIDE DIMENSIONS	L x W x H: 6200 x 4000 x 3550 mm (350mm metal basement is included)
INSIDE DIMENSIONS	L x W x H: 6000 x 3900 x 2750 mm
MAIN ENTRANCE	3 folded doors with total width 2700mm and height 2650mm. Galvanized steel bended with rock wool insulation (white color). Security windows.
PERSONAL DOOR	The entry and the exit of the person is achieved by one of these doors. OPTIONAL: Side door on panels with dimensions (2400 height x 900 width).
BASEMENT	Raised metal base with 3 lines of grill and height 350mm. Braking force from 650 kg/wheel (standard) to 1000kg/wheel (extra). OPTIONAL: Floors full of grill and pneumatic elevated ramp in the inside of the cabin, to avoid trench construction in the building, and avoid the installment of the external ramp for car entrance.
WALL PANEL	Sheet metal panels with non-combustible polyurethane insulation, electrostatic paint (white color) with thickness 40mm. OPTIONAL: Rock wool panels.
LIGHTING SYSTEM	40 led light tubes (5 led tubes into 8 boxes) placed on the top of the cabin (with 45°) in complete sealing boxes. OPTIONAL 1: 12 led light tubes (3 led tubes into 4 boxes) mounted on panels with vertical layout, in complete sealing boxes. OPTIONAL 2: 16 led tubes (2 led tubes into 8 boxes) mounted on panels with horizontal layout, in complete sealing boxes.
ROOF PANELS	Sheet metal panels with non-combustible polyurethane insulation, with thickness 40mm. OPTIONAL: Rock wool panels.
CEILING FILTERS	6 pieces ceiling filters: EU-5
AIR INLET-HEATING-EX-HAUST UNIT	AGGREGATE DIMENSIONS: INTAKE: L/W/H = 1500/1550/3550 mm, EXHAUST: L/W/H = 1700/1350/2000 mm. Structure: Metallic structure and panels in galvanized double sheet iron, containing in between insulating material.
AIR INLET	1 Centrifugal fan, belt drive motor. Asynchronous three-phase motors 10HP (7.5 KW). Maximum air flow 22.000m³. Pocket filter F3-EU5.
HEATING UNIT	1 RIELLO oil burner (OPTIONAL GAS) adapted on a heat exchanger of 120.000 Kcal. 1 Pneumatic damper switch between painting and drying phase with which we achieve 90% recirculation of the same air for faster temperature rise.
EXHAUST UNIT	1 centrifugal fan, belt drive motor. Asynchronous three-phase motors 10HP (7.5 KW). Maximum air flow 22.000m³. Pocket filter F3-EU5.
CONTROL PANEL	1 Control board with plc management of the system, soft starters for the motors. Spray, heated spray, bake, time setting, lighting switch, temperature – limit device, power switch, failure alarm, hour meter for filters with siren for filter changing.

EASY TECH BMHB

6500x4000



OUTSIDE DIMENSIONS	L x W x H: 6700 x 4000 x 3550 mm (350mm metal basement is included)
INSIDE DIMENSIONS	L x W x H: 6500 x 3900 x 2750 mm
MAIN ENTRANCE	3 folded doors with total width 2700mm and height 2650mm. Galvanized steel bended with rock wool insulation (white color). Security windows.
PERSONAL DOOR	The entry and the exit of the person is achieved by one of these doors. OPTIONAL: Side door on panels with dimensions (2400 height x 900 width).
BASEMENT	Raised metal base with 3 lines of grill and height 350mm. Braking force from 650 kg/wheel (standard) to 1000kg/wheel (extra). OPTIONAL: Floors full of grill and pneumatic elevated ramp in the inside of the cabin, to avoid trench construction in the building, and avoid the installment of the external ramp for car entrance.
WALL PANEL	Sheet metal panels with non-combustible polyurethane insulation, electrostatic paint (white color) with thickness 40mm. OPTIONAL: Rock wool panels.
LIGHTING SYSTEM	40 led light tubes (5 led tubes into 8 boxes) placed on the top of the cabin (with 45°) in complete sealing boxes. OPTIONAL 1: 12 led light tubes (3 led tubes into 4 boxes) mounted on panels with vertical layout, in complete sealing boxes. OPTIONAL 2: 16 led tubes (2 led tubes into 8 boxes) mounted on panels with horizontal layout, in complete sealing boxes.
ROOF PANELS	Sheet metal panels with non-combustible polyurethane insulation, with thickness 40mm. OPTIONAL: Rock wool panels.
CEILING FILTERS	7 pieces ceiling filters: EU-5
AIR INLET-HEATING-EX-HAUST UNIT	AGGREGATE DIMENSIONS: INTAKE: L/W/H = 1500/1550/3550 mm, EXHAUST: L/W/H = 1700/1350/2000 mm. Structure: Metallic structure and panels in galvanized double sheet iron, containing in between insulating material.
AIR INLET	1 Centrifugal fan, belt drive motor. Asynchronous three-phase motors 10HP (7.5 KW). Maximum air flow 24.000m ³ . Pocket filter F3-EU5.
HEATING UNIT	1 RIELLO oil burner (OPTIONAL GAS) adapted on a heat exchanger of 120.000 Kcal. 1 Pneumatic damper switch between painting and drying phase with which we achieve 90% recirculation of the same air for faster temperature rise.
EXHAUST UNIT	1 centrifugal fan, belt drive motor. Asynchronous three-phase motors 10HP (7.5 KW). Maximum air flow 24.000m ³ . Pocket filter F3-EU5.
CONTROL PANEL	1 Control board with plc management of the system, soft starters for the motors. Spray, heated spray, bake, time setting, lighting switch, temperature – limit device, power switch, failure alarm, hour meter for filters with siren for filter changing.

EASY TECH BMHB

7000x4000



OUTSIDE DIMENSIONS	L x W x H: 7200 x 4000 x 3550 mm (350mm metal basement is included)
INSIDE DIMENSIONS	L x W x H: 7000 x 3900 x 2750 mm
MAIN ENTRANCE	3 folded doors with total width 2700mm and height 2650mm. Galvanized steel bended with rock wool insulation (white color). Security windows.
PERSONAL DOOR	The entry and the exit of the person is achieved by one of these doors. OPTIONAL: Side door on panels with dimensions (2400 height x 900 width).
BASEMENT	Raised metal base with 3 lines of grill and height 350mm. Braking force from 650 kg/wheel (standard) to 1000kg/wheel (extra). OPTIONAL: Floors full of grill and pneumatic elevated ramp in the inside of the cabin, to avoid trench construction in the building, and avoid the installment of the external ramp for car entrance.
WALL PANEL	Sheet metal panels with non-combustible polyurethane insulation, electrostatic paint (white color) with thickness 40mm. OPTIONAL: Rock wool panels.
LIGHTING SYSTEM	50 led light tubes (5 led tubes into 10 boxes) placed on the top of the cabin (with 45°) in complete sealing boxes. OPTIONAL 1: 18 led light tubes (3 led tubes into 6 boxes) mounted on panels with vertical layout, in complete sealing boxes. OPTIONAL 2: 20 led tubes (2 led tubes into 8 boxes) mounted on panels with horizontal layout, in complete sealing boxes.
ROOF PANELS	Sheet metal panels with non-combustible polyurethane insulation, with thickness 40mm. OPTIONAL: Rock wool panels.
CEILING FILTERS	7 pieces ceiling filters: EU-5
AIR INLET-HEATING-EX-HAUST UNIT	AGGREGATE DIMENSIONS: INTAKE: L/W/H = 1900/1550/3550 mm, EXHAUST: L/W/H = 1700/1350/2000 mm. Structure: Metallic structure and panels in galvanized double sheet iron, containing in between insulating material.
AIR INLET	1 Double centrifugal fan, belt drive motor. Asynchronous three-phase motors 10HP (7.5 KW). Maximum air flow 26.000m³. Pocket filter F3-EU5.
HEATING UNIT	1 RIELLO oil burner (OPTIONAL GAS) adapted on a heat exchanger of 160.000 Kcal. 1 Pneumatic damper switch between painting and drying phase with which we achieve 90% recirculation of the same air for faster temperature rise.
EXHAUST UNIT	1 centrifugal fan, belt drive motor. Asynchronous three-phase motors 10HP (7.5 KW). Maximum air flow 26.000m³. Pocket filter F3-EU5.
CONTROL PANEL	1 Control board with plc management of the system, soft starters for the motors. Spray, heated spray, bake, time setting, lighting switch, temperature – limit device, power switch, failure alarm, hour meter for filters with siren for filter changing.

HEAT WAVE CABINE

The endothermic booth works without burner, during the various phases of manufacturing, heat is generated and diffused inside the booth through radiant panels placed on the walls and on the roof (plenum), heating up the product to be worked through radiation.

100% electrical

100% eco-friendly

0% noise

0% flue and exhaust gas

Thanks to the flexibility of our control panel, we can reduce the operating costs, through the cyclical and programmed switch on of radiant panels, to maintain the temperature of the surface to dry unchanged, with the minimum power consumption. The same control panel allows the partial switch on of the right and left radiant panels to be able to work only on the surface interested by the painting and drying cycle. Preparation phase : the ignition of panels increases the temperature of the plate exposed to radiation to approx. 23/30°C; preheating time goes from 3 to 5 minutes, according to the room temperature. Painting phase: thanks to radiation, of the heat on the plate, the paint disperses water and solvents faster; in this way the flash-off times between the layers considerably decrease. Drying phase (with programmed ventilation inside the booth of 2 minutes each 10 minutes of work to remove gases originated from the flash-off of the paints. Drying phase: the panels reach their max. temperature in a short time, increasing the plate temperature till 70°C, helping the paint drying process.

The reduction of working times involves the reduction of labor costs and the increase of daily production, but the real revelation concerns the cutting of the costs related to the system management.

Furthermore, compared with the traditional booth, there is no expulsion of combustion gases into the atmosphere.



HEAT WAVE

34KW DMDB

7000x4100



OUTSIDE DIMENSIONS	L x W x H: 7200 x 4100 x 3600 mm (400mm metal basement is included)
INSIDE DIMENSIONS	L x W x H: 7000 x 4000 x 2750 mm
MAIN ENTRANCE	3 folded doors with total width 2700mm and height 2650mm. Galvanized steel bended with rock wool insulation (white color). Security windows.
PERSONAL DOOR	The entry and the exit of the person is achieved by one of these doors. OPTIONAL: Side door on panels with dimensions (2400 height x 900 width).
BASEMENT	Raised metal base with full of grill and height 400mm. Braking force from 650 kg/wheel (standard) to 1000kg/wheel (extra). OPTIONAL: Floors full of grill and pneumatic elevated ramp in the inside of the cabin, to avoid trench construction in the building, and avoid the installment of the external ramp for car entrance.
WALL PANEL	Sheet metal panels with rock wool insulation, electrostatic paint (white color) with thickness 50mm.
LIGHTING SYSTEM	50 Led light tubes (5 led tubes into 10 boxes) placed on the top of the cabin (with 45°), 20 led tubes (2 led tubes into 10 boxes) mounted on panels with horizontal layout, in complete sealing boxes.
ROOF PANELS	Galvanized sheet metal bended panels with 40mm thickness. Rock wool insulation.
CEILING FILTERS	7 pieces ceiling filters: VILEDON F-5 / EU-5
AIR INLET-HEATING-EX-HAUST UNIT	AGGREGATE DIMENSIONS: L/W/H = 4100/1350/3600 mm. Structure: Metallic structure and panels in galvanized double sheet iron, containing in between insulating material.
AIR INLET	1 centrifugal fan, direct couple on motor. Asynchronous three-phase motors 10HP (7.5 KW). Maximum air flow 26.000m³. Pocket filter F3-EU5.
HEATING UNIT	4+4 endothermic panels placed on the sides of the booth. 2 endothermic panels placed on the rear side of the booth. 4 endothermic panels placed on the upper part of the booth.
EXHAUST UNIT	1 centrifugal fan, direct couple on motor. Asynchronous three-phase motors 10HP (7.5 KW). Maximum air flow 26.000m³. Pocket filter F3-EU5.
CONTROL PANEL	1 control board with a touch screen display, set time/temperature/cabin pressure and an hardware for motor inverters. Automatic pressure in cabin. 6 different programs: stand-by/painting/withering/drying/cooling. The same control panel allows the partial switch on of the left and right panels to be able to work only on the surface interested by the painting and drying cycle, with the minimum power consumption.

HEAT WAVE

40KW DMDB

7000x4500



OUTSIDE DIMENSIONS	L x W x H: 7700 x 4500 x 3800 mm (400mm metal basement is included)
INSIDE DIMENSIONS	L x W x H: 7000 x 4400 x 2950 mm
MAIN ENTRANCE	4 folded doors with total width 3600mm and height 2850mm. Galvanized steel bended with rock wool insulation (white color). Security windows.
PERSONAL DOOR	The entry and the exit of the person is achieved by one of these doors. OPTIONAL: Side door on panels with dimensions (2400 height x 900 width).
BASEMENT	Raised metal base with full of grill and height 400mm. Braking force from 650 kg/wheel (standard) to 1000kg/wheel (extra). OPTIONAL: Floors full of grill and pneumatic elevated ramp in the inside of the cabin, to avoid trench construction in the building, and avoid the installment of the external ramp for car entrance.
WALL PANEL	Sheet metal panels with rock wool insulation, electrostatic paint (white color) with thickness 50mm.
LIGHTING SYSTEM	50 Led light tubes (5 led tubes into 10 boxes) placed on the top of the cabin (with 45°), 20 led tubes (2 led tubes into 10 boxes) mounted on panels with horizontal layout, in complete sealing boxes.
ROOF PANELS	Galvanized sheet metal bended panels with 40mm thickness. Rock wool insulation.
CEILING FILTERS	7 pieces ceiling filters: VILEDON F-5 / EU-5
AIR INLET-HEATING-EX-HAUST UNIT	AGGREGATE DIMENSIONS: L/W/H = 4100/1350/3800 mm. Structure: Metallic structure and panels in galvanized double sheet iron, containing in between insulating material.
AIR INLET	1 centrifugal fan, direct couple on motor. Asynchronous three-phase motors 12.5HP (9 KW). Maximum air flow 28.000m³. Pocket filter F3-EU5.
HEATING UNIT	4+4 endothermic panels placed on the sides of the booth. 2 endothermic panels placed on the rear side of the booth. 7 endothermic panels placed on the upper part of the booth.
EXHAUST UNIT	1 centrifugal fan, direct couple on motor. Asynchronous three-phase motors 12.5HP (9 KW). Maximum air flow 28.000m³. Pocket filter F3-EU5.
CONTROL PANEL	1 control board with a touch screen display, set time/temperature/cabin pressure and an hardware for motor inverters. Automatic pressure in cabin. 6 different programs: stand-by/painting/withering/drying/cooling. The same control panel allows the partial switch on of the left and right panels to be able to work only on the surface interested by the painting and drying cycle, with the minimum power consumption.

HEAT WAVE

51KW DMDB

8000x4500



OUTSIDE DIMENSIONS	L x W x H: 8200 x 4500 x 3800 mm (400mm metal basement is included)
INSIDE DIMENSIONS	L x W x H: 8000 x 4400 x 2950 mm
MAIN ENTRANCE	4 folded doors with total width 3600mm and height 2850mm. Galvanized steel bended with rock wool insulation (white color). Security windows.
PERSONAL DOOR	The entry and the exit of the person is achieved by one of these doors. OPTIONAL: Side door on panels with dimensions (2400 height x 900 width).
BASEMENT	Raised metal base with full of grill and height 400mm. Braking force from 650 kg/wheel (standard) to 1000kg/wheel (extra). OPTIONAL: Floors full of grill and pneumatic elevated ramp in the inside of the cabin, to avoid trench construction in the building, and avoid the installment of the external ramp for car entrance.
WALL PANEL	Sheet metal panels with rock wool insulation, electrostatic paint (white color) with thickness 50mm.
LIGHTING SYSTEM	50 Led light tubes (5 led tubes into 10 boxes) placed on the top of the cabin (with 45°), 20 led tubes (2 led tubes into 10 boxes) mounted on panels with horizontal layout, in complete sealing boxes.
ROOF PANELS	Galvanized sheet metal bended panels with 40mm thickness. Rock wool insulation.
CEILING FILTERS	8 pieces ceiling filters: VILEDON F-5 / EU-5
AIR INLET-HEATING-EX-HAUST UNIT	AGGREGATE DIMENSIONS: L/W/H = 4100/1350/3800 mm. Structure: Metallic structure and panels in galvanized double sheet iron, containing in between insulating material.
AIR INLET	1 centrifugal fan, direct couple on motor. Asynchronous three-phase motors 15HP (11 KW). Maximum air flow 32.000m³. Pocket filter F3-EU5.
HEATING UNIT	4+4 endothermic panels placed on the sides of the booth. 2 endothermic panels placed on the rear side of the booth. 7 endothermic panels placed on the upper part of the booth.
EXHAUST UNIT	1 centrifugal fan, direct couple on motor. Asynchronous three-phase motors 15HP (11 KW). Maximum air flow 32.000m³. Pocket filter F3-EU5.
CONTROL PANEL	1 control board with a touch screen display, set time/temperature/cabin pressure and an hardware for motor inverters. Automatic pressure in cabin. 6 different programs: stand-by/painting/withering/drying/cooling. The same control panel allows the partial switch on of the left and right panels to be able to work only on the surface interested by the painting and drying cycle, with the minimum power consumption.

ERGONOMICS

The Ergonomic cabin is the best choice for those with limited work space. The material dissipation differs from that of the conventional paint booths, as it happens in the back or the lateral side of the cabin, since it does not have a base. Made equally from the highest quality materials.

There is possibility of adding equipment such as inverter, gas burners, direct-fire burner and fan with rear wheel tilt.

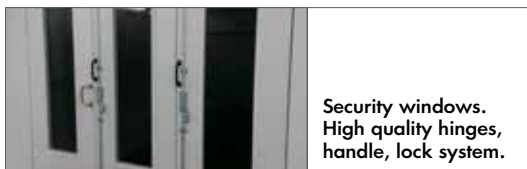
It is available in various dimensions.



ERGONOMIC BMHB



STANDARD EQUIPMENT



Belt drive motor-fan



Air inlet/exhaust pocket filters.



Stainless steel Heat exchanger couple on Riello oil / gas burner



1 pneumatic damper, switch between painting and drying phase.



EXTRA EQUIPMENT

Control board with plc management of the system, soft starters for motors



Led light on panels with horizontal position



Led light on panels with vertical position

ERGONOMIC SEMI DOWNDRAFT BMHB 6000x4000



OUTSIDE DIMENSIONS	CABIN: L x W x H: 6100 x 4000 x 2900 - 3200 mm REAR UNIT: L x W x H: 900 x 4000 x 2000 mm
INSIDE DIMENSIONS	L x W x H: 6000 x 3900 x 2450 - 2750 mm
MAIN ENTRANCE	3 folded doors with total width 2700mm and height 2650mm. Galvanized steel bended with rock wool insulation (<i>white color</i>). Security windows.
PERSONAL DOOR	The entry and the exit of the person is achieved by one of these doors. OPTIONAL: Side door on panels with dimensions (2400 height x 900 width).
BASEMENT	Concrete basement.
WALL PANEL	Sheet metal panels with non-combustible polyurethane insulation, electrostatic paint (<i>white color</i>) with thickness 40mm. OPTIONAL: Rock wool panels
LIGHTING SYSTEM	32 led light tubes (4 led tubes into 10 boxes) placed on the top of the cabin (with 45°) in complete sealing boxes. OPTIONAL 1: 12 led light tubes (3 led tubes into 6 boxes) mounted on panels with vertical layout, in complete sealing boxes. OPTIONAL 2: 16 led tubes (2 led tubes into 8 boxes) mounted on panels with horizontal layout, in complete sealing boxes.
ROOF PANELS	Sheet metal panels with non-combustible polyurethane insulation, with thickness 40mm. OPTIONAL: Rock wool panels.
CEILING FILTERS	3 pieces ceiling filters: G-560 F-5 / EU-5
AIR INLET-HEATING-EXHAUST UNIT	AGGREGATE DIMENSIONS: INTAKE: L/W/H = 1500/1550/3550 mm, EXHAUST: L/W/H = 4000/900/2000 mm. Structure: Metallic structure and panels in galvanized double sheet iron, containing in between insulating material.
AIR INLET	1 centrifugal fan, belt drive motor. Asynchronous three-phase motors 7.5HP (5.5 KW). Maximum air flow 20.000m³. Pocket filter F3-EU5
HEATING UNIT	1 RIELLO oil burner (<i>OPTIONAL GAS</i>) adapted on a heat exchanger of 120.000 Kcal. OPTIONAL: 1 pneumatic damper switch between painting and drying phase with which we achieve 90% recirculation of the same air for faster temperature rise.
EXHAUST UNIT	1 centrifugal fan, belt drive motor. Asynchronous three-phase motors 7.5HP (5.5 KW). Maximum air flow 20.000m³. Paint stop filters.
CONTROL PANEL	1 control board with direct start motors. Spray, heated spray, bake, time setting, lighting switch, temperature – limit device, power switch, failure alarm, hour meter for filters. OPTIONAL: 1 control board with plc management of the system, soft starters for the motors. Spray, heated spray, bake, time setting, lighting switch, temperature – limit device, power switch, failure alarm, hour meter for filters with siren for filter changing.

ERGONOMIC SEMI DOWNDRAFT BMHB 6500x4000



OUTSIDE DIMENSIONS	CABIN: L x W x H: 6600 x 4000 x 2900 - 3200 mm REAR UNIT: L x W x H: 900 x 4000 x 2000 mm
INSIDE DIMENSIONS	L x W x H: 6500 x 3900 x 2450 - 2750 mm
MAIN ENTRANCE	3 folded doors with total width 2700mm and height 2650mm. Galvanized steel bended with rock wool insulation (<i>white color</i>). Security windows.
PERSONAL DOOR	The entry and the exit of the person is achieved by one of these doors. OPTIONAL: Side door on panels with dimensions (2400 height x 900 width).
BASEMENT	Concrete basement.
WALL PANEL	Sheet metal panels with non-combustible polyurethane insulation, electrostatic paint (<i>white color</i>) with thickness 40mm. OPTIONAL: Rock wool panels
LIGHTING SYSTEM	32 led light tubes (4 led tubes into 10 boxes) placed on the top of the cabin (with 45°) in complete sealing boxes. OPTIONAL 1: 12 led light tubes (3 led tubes into 6 boxes) mounted on panels with vertical layout, in complete sealing boxes. OPTIONAL 2: 16 led tubes (2 led tubes into 8 boxes) mounted on panels with horizontal layout, in complete sealing boxes.
ROOF PANELS	Sheet metal panels with non-combustible polyurethane insulation, with thickness 40mm. OPTIONAL: Rock wool panels.
CEILING FILTERS	3 pieces ceiling filters: G-560 F-5 / EU-5
AIR INLET-HEATING-EX-HAUST UNIT	AGGREGATE DIMENSIONS: INTAKE: L/W/H = 1500/1550/3550 mm, EXHAUST: L/W/H = 4000/900/2000 mm. Structure: Metallic structure and panels in galvanized double sheet iron, containing in between insulating material.
AIR INLET	1 centrifugal fan, belt drive motor. Asynchronous three-phase motors 7.5HP (5.5 KW). Maximum air flow 20.000m³. Pocket filter F3-EU5
HEATING UNIT	1 RIELLO oil burner (<i>OPTIONAL GAS</i>) adapted on a heat exchanger of 120.000 Kcal. OPTIONAL: 1 pneumatic damper switch between painting and drying phase with which we achieve 90% recirculation of the same air for faster temperature rise.
EXHAUST UNIT	1 centrifugal fan, belt drive motor. Asynchronous three-phase motors 7.5HP (5.5 KW). Maximum air flow 20.000m³. Paint stop filters.
CONTROL PANEL	1 control board with direct start motors. Spray, heated spray, bake, time setting, lighting switch, temperature – limit device, power switch, failure alarm, hour meter for filters. OPTIONAL: 1 control board with plc management of the system, soft starters for the motors. Spray, heated spray, bake, time setting, lighting switch, temperature – limit device, power switch, failure alarm, hour meter for filters with siren for filter changing.

ERGONOMIC SEMI DOWNDRAFT BMHB 7000x4000



OUTSIDE DIMENSIONS	CABIN: L x W x H: 7100 x 4000 x 2900 - 3200 mm REAR UNIT: L x W x H: 900 x 4000 x 2000 mm
INSIDE DIMENSIONS	L x W x H: 7000 x 3900 x 2450 - 2750 mm
MAIN ENTRANCE	3 folded doors with total width 2700mm and height 2650mm. Galvanized steel bended with rock wool insulation (<i>white color</i>). Security windows.
PERSONAL DOOR	The entry and the exit of the person is achieved by one of these doors. OPTIONAL: Side door on panels with dimensions (2400 height x 900 width).
BASEMENT	Concrete basement.
WALL PANEL	Sheet metal panels with non-combustible polyurethane insulation, electrostatic paint (<i>white color</i>) with thickness 40mm. OPTIONAL: Rock wool panels
LIGHTING SYSTEM	40 led light tubes (4 led tubes into 10 boxes) placed on the top of the cabin (<i>with 45°</i>) in complete sealing boxes. OPTIONAL 1: 12 led light tubes (3 led tubes into 6 boxes) mounted on panels with vertical layout, in complete sealing boxes. OPTIONAL 2: 16 led tubes (2 led tubes into 8 boxes) mounted on panels with horizontal layout, in complete sealing boxes.
ROOF PANELS	Sheet metal panels with non-combustible polyurethane insulation, with thickness 40mm. OPTIONAL: Rock wool panels.
CEILING FILTERS	3 pieces ceiling filters: G-560 F-5 / EU-5
AIR INLET-HEATING-EX-HAUST UNIT	AGGREGATE DIMENSIONS: INTAKE: L/W/H = 1500/1550/3550 mm, EXHAUST: L/W/H = 4000/900/2000 mm. Structure: Metallic structure and panels in galvanized double sheet iron, containing in between insulating material.
AIR INLET	1 centrifugal fan, belt drive motor. Asynchronous three-phase motors 7.5HP (5.5 KW). Maximum air flow 20.000m ³ . Pocket filter F3-EU5
HEATING UNIT	1 RIELLO oil burner (<i>OPTIONAL GAS</i>) adapted on a heat exchanger of 120.000 Kcal. OPTIONAL: 1 pneumatic damper switch between painting and drying phase with which we achieve 90% recirculation of the same air for faster temperature rise.
EXHAUST UNIT	1 centrifugal fan, belt drive motor. Asynchronous three-phase motors 7.5HP (5.5 KW). Maximum air flow 20.000m ³ . Paint stop filters.
CONTROL PANEL	1 control board with direct start motors. Spray, heated spray, bake, time setting, lighting switch, temperature – limit device, power switch, failure alarm, hour meter for filters. OPTIONAL: 1 control board with plc management of the system, soft starters for the motors. Spray, heated spray, bake, time setting, lighting switch, temperature – limit device, power switch, failure alarm, hour meter for filters with siren for filter changing.

HIGH INTELLIGENCE FOR BIG VEHICLE DMDB



HIGH INTELLIGENCE DMDB



STANDARD EQUIPMENT



Concrete basement according our drawings. Led light on panels with vertical position.



Rock wool insulation panels.



Led light tubes placed on the top of the cabin (with 45° slope). Viledon ceiling filters.

OPTIONS



Led light on panels with horizontal position.



Centrifugal fan, direct couple on motor.



Direct flame gas burner Riello RX series with auto modulated flame.



Air inlet/exhaust pocket filters.



2 Damper with servo-motors belimo switch between painting and drying phase.



Control board with a touch screen display, and inverters for motors. Automatic set pressure in.

EXTRA EQUIPMENT



Heat recovery system. High efficiency static cross-flow, made of aluminum recover and an insulated housing box.



HIGH INTELLIGENCE

DMDB

14000x5000



OUTSIDE DIMENSIONS	L x W x H: 14360 x 5120 x 4500/5500 mm
INSIDE DIMENSIONS	L x W x H: 14000 x 5000 x 3900/4900 mm
MAIN ENTRANCE	One part rolo door consist of polyurethane insulation material, with total dimensions H: 3800/4800 mm and W: 4000 mm for the entry-exit of the vehicle in the cabin. OPTIONAL: Rolo door in the middle or back place of the cabin.
PERSONAL DOOR	The entry and the exit of the person is achieved by one side door on panels with dimensions (2400 h. x 900 w.).
BASEMENT	Concrete basement according to our designs.
WALL PANEL	Sheet metal panels with rock wool insulation, electrostatic paint (white color) with thickness 60mm.
LIGHTING SYSTEM	100 led light tubes (5 led tubes into 20 boxes) placed on the top of the cabin (with 45°) and 66 led light tubes (3 led tubes into 22 boxes) mounted on panels with vertical layout, in complete sealing boxes. OPTIONAL: 80 led tubes (40 led tubes into 20 boxes) mounted on panels with horizontal layout, in complete sealing boxes.
ROOF PANELS	Galvanized sheet metal bended panels with 40mm thickness. Rock wool insulation.
CEILING FILTERS	14 pieces ceiling filters: VILEDON F-5 / EU-5
AIR INLET-HEATING-EX-HAUST UNIT	AGGREGATE DIMENSIONS (EACHONE): L/W/H = 4100/1350/(high of cabin) mm. Structure: Metallic structure and panels in galvanized double sheet iron, containing in between insulating material.
AIR INLET	2 centrifugal fan, direct couple on motor. 2 asynchronous three-phase motors 15HP (11 KW). Maximum air flow 64.000m³. Pocket filter F3-EU5.
HEATING UNIT	2 direct flame gas burner RIELLO RX Series 350KW AUTOMODULATED FLAME (KW 40-350). 4 damper with servomotors belimo switch between painting and drying phase with which we achieve 90% recirculation of the same air for faster temperature rise.
EXHAUST UNIT	2 centrifugal fan, direct couple on motor. 2 asynchronous three-phase motors 15HP (11 KW). Maximum air flow 64.000m³. Pocket filter F3-EU5.
CONTROL PANEL	1 control board with a touch screen display, set time/temperature/cabin pressure and an hardware for motor inverters. Automatic pressure in cabin. 5 different programs: stand-by/painting/withering/drying/cooling.

HIGH INTELLIGENCE

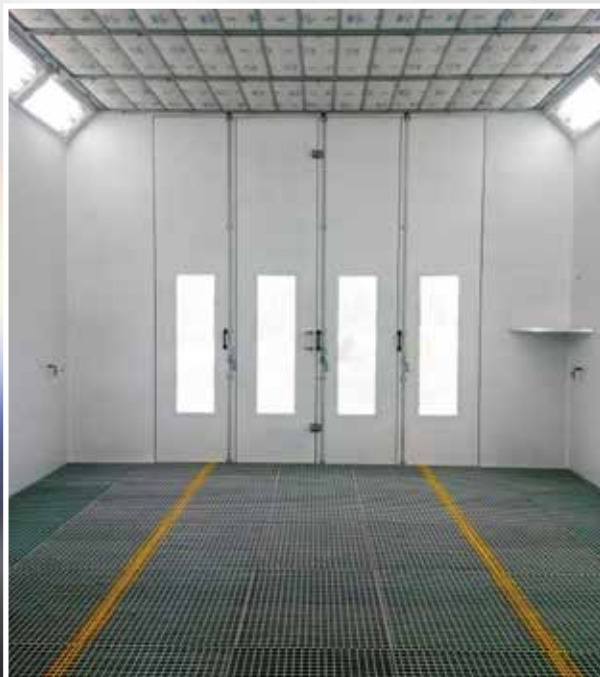
DMDB

21000x5000



OUTSIDE DIMENSIONS	L x W x H: 21360 x 5120 x 4500/5500 mm
INSIDE DIMENSIONS	L x W x H: 21000 x 5000 x 3900/4900 mm
MAIN ENTRANCE	One part rolo door consist of polyurethane insulation material, with total dimensions H: 3800/4800 mm and W: 4000 mm for the entry-exit of the vehicle in the cabin. OPTIONAL: Rolo door in the middle or back place of the cabin.
PERSONAL DOOR	The entry and the exit of the person is achieved by one side door on panels with dimensions (2400 h. x 900 w.).
BASEMENT	Concrete basement according to our designs.
WALL PANEL	Sheet metal panels with rock wool insulation, electrostatic paint (<i>white color</i>) with thickness 60mm.
LIGHTING SYSTEM	150 led light tubes (5 led tubes into 20 boxes) placed on the top of the cabin (with 45°) and 102 led light tubes (3 led tubes into 34 boxes) mounted on panels with vertical layout, in complete sealing boxes. OPTIONAL: 120 led tubes (40 led tubes into 30 boxes) mounted on panels with horizontal layout, in complete sealing boxes.
ROOF PANELS	Galvanized sheet metal bended panels with 40mm thickness. Rock wool insulation.
CEILING FILTERS	21 pieces ceiling filters: VILEDON F-5 / EU-5
AIR INLET-HEATING-EX-HAUST UNIT	AGGREGATE DIMENSIONS (EACHONE): L/W/H = 4100/1350/(high of cabin) mm. Structure: Metallic structure and panels in galvanized double sheet iron, containing in between insulating material.
AIR INLET	3 centrifugal fan, direct couple on motor. 3 asynchronous three-phase motors 15HP (11 KW). Maximum air flow 96.000m³. Pocket filter F3-EU5.
HEATING UNIT	3 direct flame gas burner RIELLO RX Series 350KW AUTOMODULATED FLAME (KW 40-350). 6 damper with servomotors belimo switch between painting and drying phase with which we achieve 90% recirculation of the same air for faster temperature rise.
EXHAUST UNIT	3 centrifugal fan, direct couple on motor. 3 asynchronous three-phase motors 15HP (11 KW). Maximum air flow 96.000m³. Pocket filter F3-EU5.
CONTROL PANEL	1 control board with a touch screen display, set time/temperature/cabin pressure and an hardware for motor inverters. Automatic pressure in cabin. 5 different programs: stand-by/painting/withering/drying/cooling.

HIGH INTELLIGENCE FOR BIG VEHICLE BMHB



HIGH INTELLIGENCE BMHB



STANDARD EQUIPMENT



Concrete basement according our drawings. Led light on panels with vertical position.



Rock wool insulation panels.



Led light tubes placed on the top of the cabin (with 45° slope). Viledon ceiling filters.

OPTIONS



Led light on panels with horizontal position.

Belt drive motor-fan



Stainless steel Heat exchanger couple on Riello oil / gas burner



Air inlet/exhaust pocket filters.



1 pneumatic damper, switch between painting and drying phase.



Control board with a touch screen display, and inverters for motors. Automatic set pressure in.



EXTRA EQUIPMENT



Heat recovery system. High efficiency static cross-flow, made of aluminum recover and an insulated housing box.



HIGH INTELLIGENCE

BMHB

14000x5000



OUTSIDE DIMENSIONS	L x W x H: 14360 x 5120 x 4500/5500 mm
INSIDE DIMENSIONS	L x W x H: 14000 x 5000 x 3900/4900 mm
MAIN ENTRANCE	One part rolo door consist of polyurethane insulation material, with total dimensions H: 3800/4800 mm and W: 4000 mm for the entry-exit of the vehicle in the cabin. OPTIONAL: Rolo door in the middle or back place of the cabin.
PERSONAL DOOR	The entry and the exit of the person is achieved by one side door on panels with dimensions (2400 h. x 900 w.).
BASEMENT	Concrete basement according to our designs.
WALL PANEL	Sheet metal panels with rock wool insulation, electrostatic paint (<i>white color</i>) with thickness 60mm.
LIGHTING SYSTEM	100 led light tubes (<i>5 led tubes into 20 boxes</i>) placed on the top of the cabin (<i>with 45°</i>) and 66 led light tubes (<i>3 led tubes into 22 boxes</i>) mounted on panels with vertical layout, in complete sealing boxes. OPTIONAL: 80 led tubes (<i>40 led tubes into 20 boxes</i>) mounted on panels with horizontal layout, in complete sealing boxes.
ROOF PANELS	Galvanized sheet metal bended panels with 40mm thickness. Rock wool insulation.
CEILING FILTERS	14 pieces ceiling filters: VILEDON F-5 / EU-5
AIR INLET-HEATING-EX-HAUST UNIT	AGGREGATE DIMENSIONS (<i>EACHONE</i>): INTAKE: L/W/H = 2400/1550/(high of cabin) mm. EXHAUST: L/W/H = 2200/1350/2000 mm. Structure: Metallic structure and panels in galvanized double sheet iron, containing in between insulating material.
AIR INLET	2 double centrifugal fan, belt drive motor. 2 asynchronous three-phase motors 15HP (<i>11 KW</i>). Maximum air flow 64.000m ³ . Pocket filter F3-EU5.
HEATING UNIT	2 RIELLO oil burner (<i>OPTIONAL GAS</i>) adapted on a heat exchanger of 250.000 Kcal. Total heating power 500.000Kcal 2 pneumatic damper switch between painting and drying phase with which we achieve 90% recirculation of the same air for faster temperature rise.
EXHAUST UNIT	2 centrifugal fan, belt drive motor. 2 asynchronous three-phase motors 15HP (<i>11 KW</i>). Maximum air flow 64.000m ³ . Pocket filter F3-EU5.
CONTROL PANEL	1 control board with a touch screen display, set time/temperature/cabin pressure and an hardware for motor invert-ers. Automatic pressure in cabin. 5 different programs: stand-by/painting/withering/drying/cooling.

HIGH INTELLIGENCE

BMHB

21000x5000



OUTSIDE DIMENSIONS	L x W x H: 21360 x 5120 x 4500/5500 mm
INSIDE DIMENSIONS	L x W x H: 21000 x 5000 x 3900/4900 mm
MAIN ENTRANCE	One part rolo door consist of polyurethane insulation material, with total dimensions H: 3800/4800 mm and W: 4000 mm for the entry-exit of the vehicle in the cabin. OPTIONAL: Rolo door in the middle or back place of the cabin.
PERSONAL DOOR	The entry and the exit of the person is achieved by one side door on panels with dimensions (2400 h. x 900 w.).
BASEMENT	Concrete basement according to our designs.
WALL PANEL	Sheet metal panels with rock wool insulation, electrostatic paint (<i>white color</i>) with thickness 60mm.
LIGHTING SYSTEM	150 led light tubes (<i>5 led tubes into 20 boxes</i>) placed on the top of the cabin (<i>with 45°</i>) and 102 led light tubes (<i>3 led tubes into 34 boxes</i>) mounted on panels with vertical layout, in complete sealing boxes. OPTIONAL: 120 led tubes (<i>40 led tubes into 30 boxes</i>) mounted on panels with horizontal layout, in complete sealing boxes.
ROOF PANELS	Galvanized sheet metal bended panels with 40mm thickness. Rock wool insulation.
CEILING FILTERS	21 pieces ceiling filters: VILEDON F-5 / EU-5
AIR INLET-HEATING-EX-HAUST UNIT	AGGREGATE DIMENSIONS (<i>EACHONE</i>): INTAKE: L/W/H = 2400/1550/(high of cabin) mm. EXHAUST: L/W/H = 2200/1350/2000 mm. Structure: Metallic structure and panels in galvanized double sheet iron, containing in between insulating material.
AIR INLET	3 double centrifugal fan, belt drive motor. 3 asynchronous three-phase motors 15HP (<i>11 KW</i>). Maximum air flow 96.000m ³ . Pocket filter F3-EU5.
HEATING UNIT	3 RIELLO oil burner (<i>OPTIONAL GAS</i>) adapted on a heat exchanger of 250.000 Kcal. Total heating power 750.000Kcal 3 pneumatic damper switch between painting and drying phase with which we achieve 90% recirculation of the same air for faster temperature rise.
EXHAUST UNIT	3 centrifugal fan, belt drive motor. 3 asynchronous three-phase motors 15HP (<i>11 KW</i>). Maximum air flow 96.000m ³ . Pocket filter F3-EU5.
CONTROL PANEL	1 control board with a touch screen display, set time/temperature/cabin pressure and an hardware for motor invert-ers. Automatic pressure in cabin. 5 different programs: stand-by/painting/withering/drying/cooling.

INDUSTRIAL

We offer to our clients complete services of design and construction of painting booths for industrial products. High quality, high standards and functionality are our trademark. We are able to actualize your ideas by offering the best solutions to the best prices, on the time needed. The high-level of our skills, our will for innovation combined with our capacities and experience allow us to form your space/room according to your needs. Our key to success is safety, authenticity, quickness in reasonable prices.





PREPERATION STATION

Our company constructs preparation units based on your needs. The units have a strong ventilation system with filters for dust retention and damaging substances, PVC curtains and a complete lighting system. A complete preparation unit which not only protects your health through exhausting preparation material, but also the environment by retaining the harmful substances in the filters. It is also known that a proper paint preparation area results in a perfect color appliance on the vehicle and that is why our company pays great attention on the construction of a complete preparation unit.





PREPERATION STATION

BL2M

6000/6500/7000



OUTSIDE DIMENSIONS	L x W x H: 6200/6700/7200 x 4000 x 3550 mm (350mm metal basement is included)
INSIDE DIMENSIONS	L x W x H: 6000/6500/7000 x 3900 x 2750 mm
BASEMENT	<p>Raised metal base (<i>full grill</i>) with 5 lines of grill and height 350mm. Braking force from 650 kg/wheel (<i>standard</i>) to 1000 kg/wheel (<i>extra</i>).</p> <p>OPTIONAL: Floors full of grill and pneumatic elevated ramp in the inside of the cabin, to avoid trench construction in the building, and avoid the installment of the external ramp for car entrance.</p>
WORKPLACE AND SUPPORTING	<p>Sheet metal panels with non-combustible polyurethane insulation on the back side, electrostatic paint (<i>white color</i>) with thickness 40mm, three sides with PVC curtain (2 pieces front 1 left + 1 right side) with rail system, supporting by 4 Steel column or steel rope hoisting.</p> <p>OPTIONAL: Sheet metal panels on the 2 sides.</p>
LIGHTING SYSTEM	40 led light tubes (4 led tubes into 10 boxes) placed on the top of the cabin (<i>with 45°</i>) in complete sealing boxes.
ROOF PANELS	Sheet metal plates.
CEILING FILTERS	7 pieces ceiling filters: G-560 F-5 / EU-5
AIR INLET-HEATING-EX-HAUST UNIT	<p>AGGREGATE DIMENSIONS: INTAKE: L/W/H = 1500/1550/3550 mm. EXHAUST: L/W/H = 1700/1350/2000 mm. Structure: Metallic structure and panels in galvanized double sheet iron, containing in between insulating material.</p>
AIR INLET	1 centrifugal fan, belt drive motor. Asynchronous three-phase motors 7.5HP (5.5 KW). Maximum air flow 18.000m ³ . Pocket filter F3-EU5.
HEATING UNIT	1 RIELLO oil burner (<i>OPTIONAL GAS</i>) adapted on a heat exchanger of 120.000 Kcal.
EXHAUST UNIT	1 centrifugal fan, belt drive motor. Asynchronous three-phase motors 7.5HP (5.5 KW). Maximum air flow 18.000m ³ . Paint stop filters.
CONTROL PANEL	1 control board with soft starters for the motors. Spray, heated spray, lighting switch, set temperature, power switch, failure alarm, and hour meter for filters.

PREPERATION STATION

BM

6000/6500/7000



OUTSIDE DIMENSIONS	L x W x H: 6200/6700/7200 x 4000 x 3550 mm (350mm metal basement is included)
INSIDE DIMENSIONS	L x W x H: 6000/6500/7000 x 3900 x 2750 mm
BASEMENT	<p>Raised metal base (<i>full grill</i>) with 5 lines of grill and height 350mm. Braking force from 650 kg/wheel (<i>standard</i>) to 1000 kg/wheel (<i>extra</i>).</p> <p>OPTIONAL: Floors full of grill and pneumatic elevated ramp in the inside of the cabin, to avoid trench construction in the building, and avoid the installment of the external ramp for car entrance.</p>
WORKPLACE AND SUPPORTING	<p>Four sides with PVC curtain (2 pieces front, 1 piece back, 1 left + 1 right side) with rail system, supporting by 4 Steel column or steel rope hoisting.</p> <p>OPTIONAL: Sheet metal panels on the 3 sides.</p>
LIGHTING SYSTEM	NO
ROOF PANELS	NO
CEILING FILTERS	NO
AIR INLET-HEATING-EX-HAUST UNIT	<p>DIMENSIONS EXHAUST: L/W/H = 1700/1350/2000 mm. Structure: Metallic structure and panels in galvanized double sheet iron, containing in between insulating material.</p>
AIR INLET	NO
HEATING UNIT	NO
EXHAUST UNIT	<p>1 centrifugal fan, belt drive motor. Asynchronous three-phase motors 7.5HP (5.5 KW). Maximum air flow 18.000m³. Paint stop filters.</p>
CONTROL PANEL	1 control board with soft starters for the motors and hour meter for filters.

PREPERATION STATION

L2M

6000/6500/7000

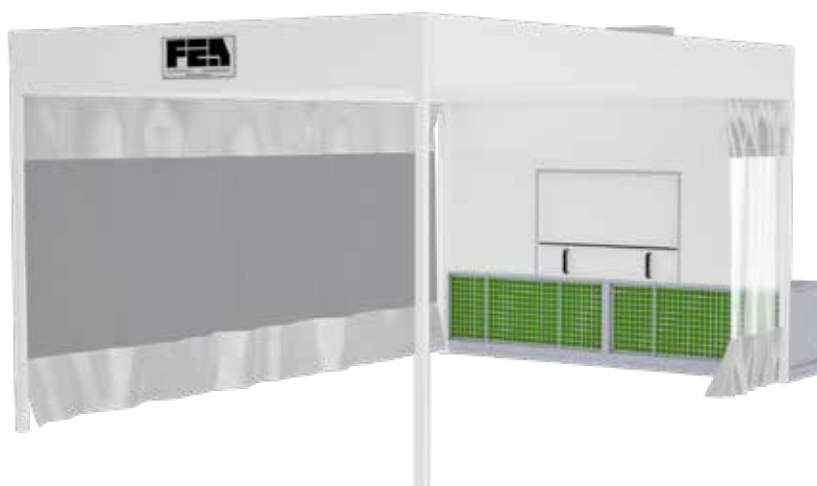


OUTSIDE DIMENSIONS	L x W x H: 6200/6700/7200 x 4000 x 3200 mm
INSIDE DIMENSIONS	L x W x H: 6000/6500/7000 x 3900 x 2750 mm
BASEMENT	Concrete basement.
WORKPLACE AND SUPPORTING	Sheet metal panels with non-combustible polyurethane insulation on the back side, electrostatic paint (<i>white color</i>) with thickness 40mm, three sides with PVC curtain (<i>2 pieces front 1 left + 1 right side</i>) with rail system, supporting by 4 Steel column or steel rope hoisting. OPTIONAL: Sheet metal panels on the 2 sides.
LIGHTING SYSTEM	40 led light tubes (<i>4 led tubes into 10 boxes</i>) placed on the top of the cabin (<i>with 45°</i>) in complete sealing boxes.
ROOF PANELS	Sheet metal plates.
CEILING FILTERS	7 pieces ceiling filters: G-560 F-5 / EU-5
AIR INLET-HEATING-EX-HAUST UNIT	AGGREGATE DIMENSIONS: INTAKE: L/W/H = 1500/1000/3550 mm. EXHAUST: L/W/H = 4000/900/2000 mm. Structure: Metallic structure made of galvanized panels.
AIR INLET	1 centrifugal fan, belt drive motor. Asynchronous three-phase motors 7.5HP (5.5 KW). Maximum air flow 18.000m³. Pocket filter F3-EU5.
HEATING UNIT	1 RIELLO oil burner (<i>OPTIONAL GAS</i>) adapted on a heat exchanger of 120.000 Kcal.
EXHAUST UNIT	1 centrifugal fan, belt drive motor. Asynchronous three-phase motors 7.5HP (5.5 KW). Maximum air flow 18.000m³. Paint stop filters.
CONTROL PANEL	1 control board with soft starters for the motors. Spray, heated spray, lighting switch, set temperature, power switch, failure alarm, and hour meter for filters.

PREPERATION STATION

CMB

6000/6500/7000



OUTSIDE DIMENSIONS	L x W x H: 6200/6700/7200 x 4000 x 3200 mm
INSIDE DIMENSIONS	L x W x H: 6000/6500/7000 x 3900 x 2750 mm
BASEMENT	Concrete basement.
WORKPLACE AND SUPPORTING	Sheet metal panels with non-combustible polyurethane insulation on the back side, electrostatic paint (white color) with thickness 40mm, three sides with PVC curtain (2 pieces front 1 left + 1 right side) with rail system, supporting by 4 Steel column or steel rope hoisting. OPTIONAL: Sheet metal panels on the 2 sides.
LIGHTING SYSTEM	NO
ROOF PANELS	NO
CEILING FILTERS	NO
AIR INLET-HEATING-EX-HAUST UNIT	DIMENSIONS EXHAUST: L/W/H = 4000/900/2000 mm. Structure: Metallic structure made of galvanized panels.
AIR INLET	NO
HEATING UNIT	NO
EXHAUST UNIT	1 centrifugal fan, belt drive motor. Asynchronous three-phase motors 7.5HP (5.5 KW). Maximum air flow 18.000m ³ . Paint stop filters.
CONTROL PANEL	1 control board with soft starters for the motors and hour meter for filters.

PREPERATION STATION

PREP TYPE MB 3000



	TYPE 5.5	TYPE 7.5
OUTSIDE DIMENSIONS	L x W x H: 3000 x 900 x 2500 mm	
EXHAUST UNIT	Structure: Metallic structure made of galvanized panels.	
EXHAUST MOTORFAN	1 centrifugal fan, belt drive motor. Asynchronous three-phase motors 5.5HP (4 KW). Maximum air flow 16.000m ³ . Paint stop filters.	1 centrifugal fan, belt drive motor. Asynchronous three-phase motors 7.5HP (5.5 KW). Maximum air flow 18.000m ³ . Paint stop filters.
CONTROL PANEL	1 control board with direct start motor. OPTIONAL: Inverter	

PREPERATION STATION

PREP TYPE MB 4000



	TYPE 5.5	TYPE 7.5
OUTSIDE DIMENSIONS	L x W x H: 4000 x 900 x 2500 mm	
EXHAUST UNIT	Structure: Metallic structure made of galvanized panels.	
EXHAUST MOTORFAN	1 centrifugal fan, belt drive motor. Asynchronous three-phase motors 7.5HP (5.5 KW). Maximum air flow 18.000m ³ . Paint stop filters.	1 centrifugal fan, belt drive motor. Asynchronous three-phase motors 10HP (7.5 KW). Maximum air flow 22.000m ³ . Paint stop filters.
CONTROL PANEL	1 control board with soft starter for the motor and hour meter for filters.	
	OPTIONAL: Inverter	

AIR HEATING GENERATOR

Our company constructs air heating generator units for the heating of the incoming air to the cabin. They are designed according to the European standards. We provide variety of capacities, dimensions and different ways of heating and in this way we are capable of customizing any booth. The function of the motor can be achieved by an inverter or a direct soft starter. The heating can be actualized either by a burner, which is adapted to heat exchanger, or with a direct fire gas burner. This option brings down fuel consumption and substantially reduces CO, so chimneys are not used.



AIR HEATING GENERATOR

DMDF SERIES



TYPE 10/1600		TYPE 12.5/1600		TYPE 15/1600	
DIMENSIONS		Group: L x W x H: 1600 x 1350 x (adj. height) mm Damper: L x W x H: 700 x 1350 x 1500 mm			
STRUCTURE		Metallic structure and panels in galvanized double sheet iron, containing in between insulating material.			
AIR INLET		1 turbine coupled directly to the motor with reverse blade. 1 Asynchronous three-phase motors 10HP (7.5 KW). Maximum air flow 26.000m³. Pocket filter F3-EU5.		1 turbine coupled directly to the motor with reverse blade. 1 Asynchronous three-phase motors 15HP (11 KW). Maximum air flow 32.000m³. Pocket filter F3-EU5.	
HEATING UNIT		1 RIELLO direct flame gas burner TYPE RX 180 AUTOMODULATE (KW 40-180). 2 damper with servomotors belimo for switching function of paint / baking with which we achieve 90% recirculation of the same air for faster temperature rise. OPTIONAL: RX250		1 RIELLO direct flame gas burner TYPE RX 250 AUTOMODULATE (KW 60-250). 2 damper with servomotors belimo for switching function of paint / baking with which we achieve 90% recirculation of the same air for faster temperature rise.	
CONTROL PANEL		1 control board with inverter / soft starter for the motor. Spray, heated spray, bake, time setting, temperature – limit device thermostat, power switch, failure alarm, hour meter for filter changing.			

AIR HEATING GENERATOR

BH SERIES



	TYPE 5.5/1500	TYPE 7.5/1500	TYPE 10/1500
DIMENSIONS	L x W x H: 1500 x 1550 x (adjustable height) mm		
STRUCTURE	Metallic structure and panels in galvanized double sheet iron, containing in between insulating material.		
AIR INLET	1 centrifugal fan, belt drive motor. Asynchronous three-phase motors 5.5HP (4 KW). Maximum air flow 16.000m ³ . Pocket filter F3-EU5.	1 centrifugal fan, belt drive motor. Asynchronous three-phase motors 7.5HP (5.5 KW). Maximum air flow 18.000m ³ . Pocket filter F3-EU5.	1 centrifugal fan, belt drive motor. Asynchronous three-phase motors 10HP (7.5 KW). Maximum air flow 22.000m ³ . Pocket filter F3-EU5.
HEATING UNIT	1 RIELLO oil burner (OPTIONAL GAS) adapted on a heat exchanger of 120.000 Kcal. 1 pneumatic damper switch between painting and drying phase with which we achieve 90% recirculation of the same air for faster temperature rise.		
CONTROL PANEL	1 control board with inverter / soft starter for the motor. Spray, heated spray, bake, time setting, temperature – limit device thermostat, power switch, failure alarm, hour meter for filter changing.		

	TYPE 7.5/1900	TYPE 10/1900	TYPE 12.5/1900
DIMENSIONS	1900 x 1550 x (adjustable height) mm		
STRUCTURE	Metallic structure and panels in galvanized double sheet iron, containing in between insulating material.		
AIR INLET	1 double centrifugal fan, belt drive motor. Asynchronous three-phase motors 7.5HP (5.5 KW). Maximum air flow 22.000m ³ . Pocket filter F3-EU5.	1 double centrifugal fan, belt drive motor. Asynchronous three-phase motors 10HP (7.5 KW). Maximum air flow 26.000m ³ . Pocket filter F3-EU5.	1 double centrifugal fan, belt drive motor. Asynchronous three-phase motors 12.5HP (9 KW). Maximum air flow 28.000m ³ . Pocket filter F3-EU5.
HEATING UNIT	1 RIELLO oil burner (OPTIONAL GAS) adapted on a heat exchanger of 160.000 Kcal. OPTIONAL: heating 200.000Kcal		
	1 pneumatic damper switch between painting and drying phase with which we achieve 90% recirculation of the same air for faster temperature rise.		
CONTROL PANEL	1 control board with inverter / soft starter for the motor. Spray, heated spray, bake, time setting, temperature – limit device thermostat, power switch, failure alarm, hour meter for filter changing.		

	TYPE 12.5/2400	TYPE 15/2400
DIMENSIONS	L x W x H: 2400 x 1550 x (adjustable height) mm	
STRUCTURE	Metallic structure and panels in galvanized double sheet iron, containing in between insulating material.	
AIR INLET	1 double centrifugal fan, belt drive motor. Asynchronous three-phase motors 12.5HP (9 KW). Maximum air flow 30.000m ³ . Pocket filter F3-EU5.	1 double centrifugal fan, belt drive motor. Asynchronous three-phase motors 15HP (11 KW). Maximum air flow 32.000m ³ . Pocket filter F3-EU5.
HEATING UNIT	1 RIELLO oil burner (<i>OPTIONAL GAS</i>) adapted on a heat exchanger of 240.000 Kcal. 1 pneumatic damper switch between painting and drying phase with which we achieve 90% recirculation of the same air for faster temperature rise.	
CONTROL PANEL	1 control board with inverter / soft starter for the motor. Spray, heated spray, bake, time setting, temperature – limit device thermostat, power switch, failure alarm, hour meter for filter changing.	



EXHAUST UNIT GENERATOR WITH CARBON

Our company constructs anti-polluting units for the retention of solid residue that may be caused during the painting. They are designed according to the last provisions and rules of the EU. We provide a variety of different capacities and dimensions that can be adapted in any painting cabin, avoiding over-pressure or under-pressure. The function of the motor can be achieved by an inverter or a direct soft starter.



BF 1500 SERIES

	TYPE 5.5/1500	TYPE 7.5/1500
DIMENSIONS	L x W x H: 1500 x 1250 x 2600 mm	
STRUCTURE	Metallic structure and panels in galvanized double sheet iron, containing in between insulating material.	
AIR INLET	1 centrifugal fan, belt drive motor. Asynchronous three-phase motors 5.5HP (4 KW). Maximum air flow 16.000m ³ .	1 centrifugal fan, belt drive motor. Asynchronous three-phase motors 7.5HP (5.5 KW). Maximum air flow 18.000m ³ .
STAGES OF FILTERS	<ul style="list-style-type: none"> • 4 pieces paint stop filter LH G2/EU2 • 9 cartridges of filter PF3-150/EU5 • 150 kilos of carbon 	
CONTROL PANEL	1 control board with inverter / soft starter for the motor, power switch, hour meter for filter changing.	
	OPTIONAL: Inverter	

BF 1700 SERIES



	TYPE 7.5/1700	TYPE 10/1700	TYPE 12.5/1700
DIMENSIONS	L x W x H: 1700 x 1350 x 2800 mm		
STRUCTURE	Metallic structure and panels in galvanized double sheet iron, containing in between insulating material.		
AIR INLET	1 centrifugal fan, belt drive motor. Asynchronous three-phase motors 7.5HP (5.5 KW). Maximum air flow 20.000m ³ .	1 centrifugal fan, belt drive motor. Asynchronous three-phase motors 10HP (7.5 KW). Maximum air flow 24.000m ³ .	1 centrifugal fan, belt drive motor. Asynchronous three-phase motors 12.5HP (9 KW). Maximum air flow 26.000m ³ .
STAGES OF FILTERS	<ul style="list-style-type: none"> • 4 pieces paint stop filter LH G2/EU2 • 12 cartridges of filter PF3-150/EU5 • 200 kilos of carbon 		
CONTROL PANEL	1 control board with inverter / soft starter for the motor, power switch, hour meter for filter changing.		
	OPTIONAL: Inverter		

BF 2200 SERIES



	TYPE 12.5/2200	TYPE 15/2200
DIMENSIONS	L x W x H: 2200 x 1350 x 2800 mm	
STRUCTURE	Metallic structure and panels in galvanized double sheet iron, containing in between insulating material.	
AIR INLET	1 centrifugal fan, belt drive motor. Asynchronous three-phase motors 12.5HP (9 KW). Maximum air flow 28.000m ³ .	1 centrifugal fan, belt drive motor. Asynchronous three-phase motors 15HP (11 KW). Maximum air flow 32.000m ³ .
STAGES OF FILTERS	<ul style="list-style-type: none"> • 4 pieces paint stop filter LH G2/EU2 • 16 cartridges of filter PF3-150/EU5 • 250 kilos of carbon 	
CONTROL PANEL	1 control board with inverter / soft starter for the motor, power switch, hour meter for filter changing.	
	OPTIONAL: Inverter	

BENCH 25 multisystem



ADVANTAGES:

- 5-Ton pulling tower with 13,5" long run cylinder, for continuous long pulls.
- Towers turning 360°
- Full 5-Ton pulling electrohydraulic



Airdraulic pulling tower with long piston stroke, which allows continuous pull: no need to shorten the chain.



No air pipes



No pneumatic pump



No trolley

SPECIFICATIONS:

Max Height: 1600mm

Length: 3000mm

Width: 780mm

Power: 2,5HP

220 V / 380 V 50 Hz

Lifting capacity: 2500 kgr



Maximum height: 1600mm



4 Extension support
for vans and 4x4



Unique push button panel
for lifting and pulling



H = max 10 cm

BENCH 35/210I



ADVANTAGES:

The only bench with universal jig, which does not require ramps.
The fastest in the world.



Airdraulic pulling tower
with long piston stroke,
which allows continuous
pull: no need to shorten
the chain.



No air pipes



No pneumatic pump



Car bearing trolley



Unique push button panel
for lifting and pulling

SPECIFICATIONS:

Max Height: 1600mm

Min Height: 350mm

Weight: 2200kgr

Lifting time: 20sec

Lowering time: 18sec

Power: 2,5HP

220 V / 380 V 50 Hz

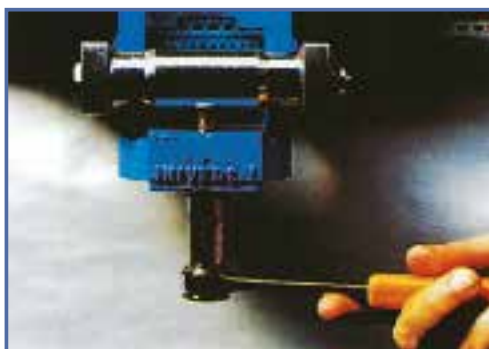
Lifting capacity: 3500kgr

Universal jig α00210α:

Universal measuring and holding system 6 universal anchorages data sheets printed in color (also available in CD)

Advantages:

- Measuring and holding all vehicles
- A unique combination of scissors lift and tilt function together for loading
- vehicles safely and quickly, and choose the ideal working height
- Data sheets printed in color (also available in CD)
- Universal jig, ramps; and tower always on the bench. Time and money saving!



Only one screw is enough to lock the cross member



To put the car on the bench, lateral ramps are not required.

LEADER BENCH 3000/P/E



Leader Bench 3000/P Hydropneumatic

Leader Bench 3000/E Electrohydraulic

Hydropneumatic or electrohydraulic lift toin ground on floor, complete with 4 medium pad, 4 low pad, with arms for lifting.

Technical Standard Details

Length: 1.980 mm

Width: 620/780 mm

Height: 11.20 mm

Height from earth: 260 mm

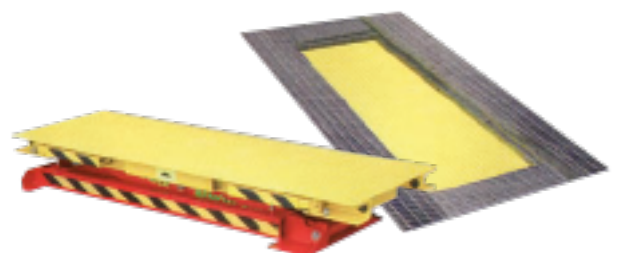
Capacity: 3.000 kg

LB3000/P: with hydropneumatic pump – 8 bar

LB3000/E: with electrohydraulic control box with motor 1,8kw – 380V/50/60hz 3phase. Is possible personalize the width of lift from min. 620 mm to max. 780 mm.

Example of inground lift.

- Optional. Frame for close the 4 side of pit.
- Optional. Pneumatic opening of arms.



MAGIC LIFT 1500



Specifications:

Weight: 85kg

Max vehicle weight: 3000kg

Max lifting height: 995mm

Lift height: 1330mm

Lift width: 660mm

Lift length: 1010mm

Pump pressure: 350bar

Safety device: maccanica

Wood case weight: 40kg



Magic lift 1500 has been projected for a sure use thanks to an easy and efficient manual block. The manual safety pin permits the column carriage to be blocked during the working operation.

